

Symantec Web Gateway

Redefining web security

Overview

The web has quickly become the new malware battleground used by attackers in today's connected world. Web-based attacks are now the primary vector for malicious activity over the Internet. The Internet and Internet applications have become the primary source of malware infections in the enterprise. Traditional URL filtering solutions don't provide adequate protection to ensure critical uptime, maintain end-user productivity, and avoid potential losses associated with web-based attacks on organizations.

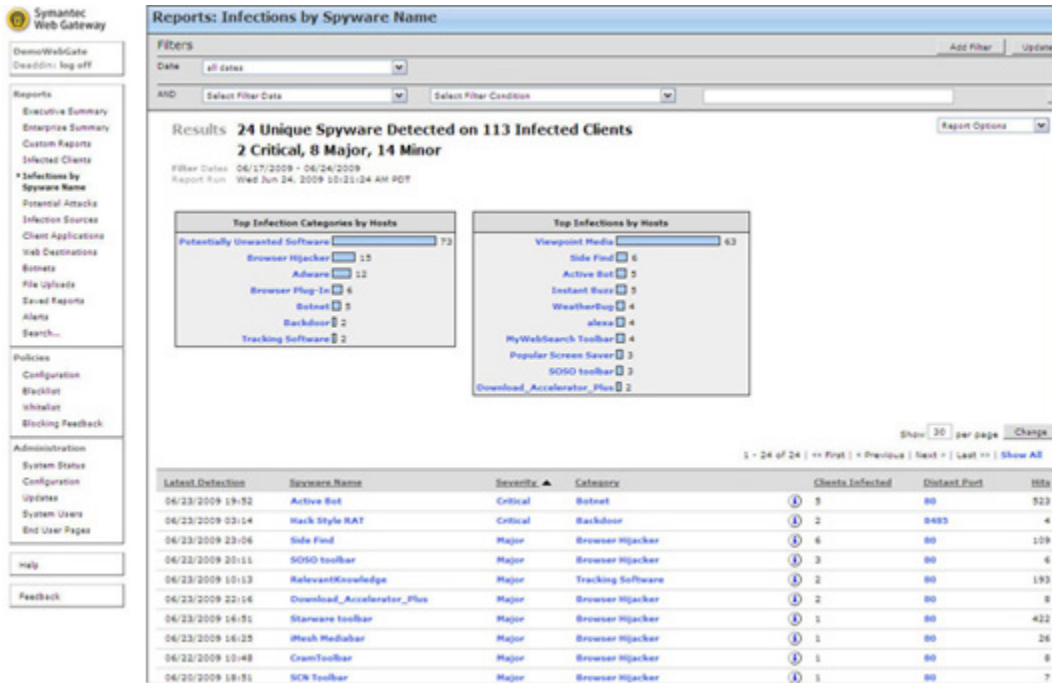
Symantec Web Gateway is an innovative Web security gateway appliance that protects organizations against Web 2.0 threats, including malicious URLs, spyware, botnets, viruses, and other types of malware, and provides controls for Web and application use. Backed by the Symantec Global Intelligence Network, the Symantec Web Gateway is built on a scalable platform that quickly and simultaneously scans for malware and inappropriate Web content, ensuring that organizations can maintain critical up-time and employee productivity that can suffer when organizations come under attack.

Symantec Web Gateway is built on a real-time inspection engine that scans traffic on-the-fly, without the delays associated with proxy-based architectures. On top of this real-time engine, Symantec Web Gateway adds multi-layer defenses to block inappropriate or malicious websites, active content, applications file downloads, "phone home" traffic, and attacks.

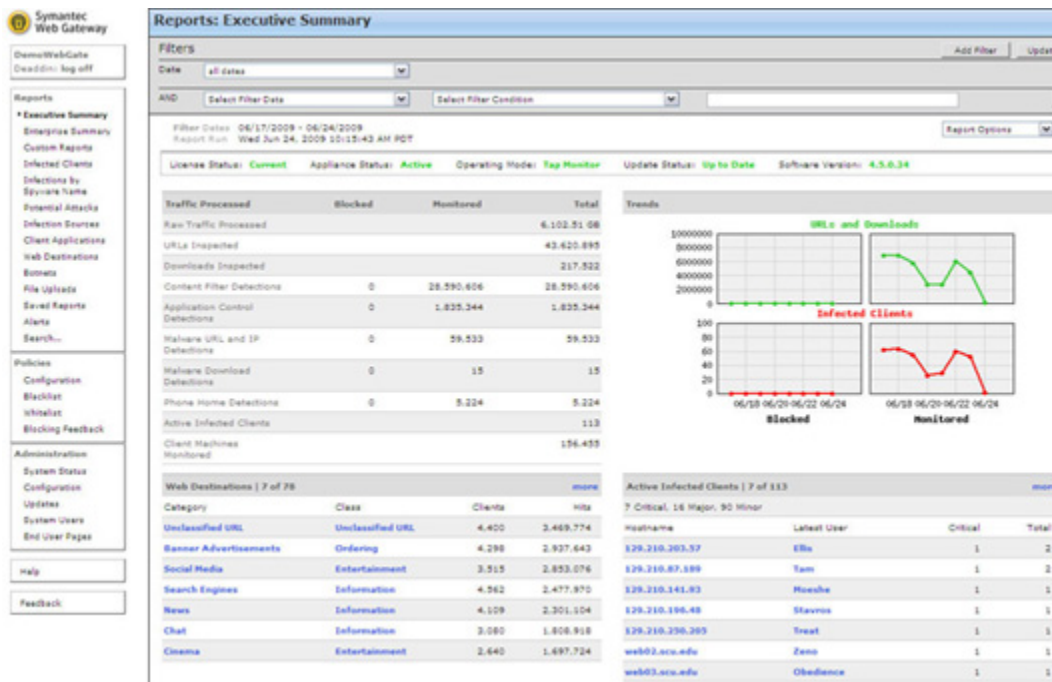


- Provides fast protection at the Web gateway across multiple protocols for inbound and outbound Web traffic
- Protects against malware threats on all Web 2.0 file transfer channels
- Ability to inspect for, detect, and block active and dormant botnets
- Features URL filtering with flexible policy controls, and in-depth reporting and alerts¹
- Advanced application control capabilities with ability to monitor and control usage by end-users spanning multiple applications
- Detects compromised endpoints by network fingerprinting and behavioral modeling
- Comprehensive web reporting and alerting (see below)
 - User-level and website-level reporting
 - Save and schedule reports and set up alerts
 - Export reports via multiple formats
- Flexible policy controls allow policy creation on any criteria and control over of how policies are applied across an organization

1. Option of purchasing additional license for URL filtering



Administrators view of Infections by Spyware Name



Administrators view of Executive Summary

Key Benefits

- Symantec Web Gateway is built on technology that is backed by the Symantec Global Intelligence Network, and powered by the Symantec AntiVirus Engine, winner of over 40 consecutive VB100 Awards since 1999
- Continuously collects data provided by the Symantec Global Intelligence Network, which encompasses some of the most extensive sources of Internet threat data in the world to offer comprehensive and up-to-date protection against the latest threats. Elements of the Global Intelligence Network include:
 - Monitored security devices in more than 70 countries, allowing Symantec to understand key threats that are impacting corporate networks. These devices log more than 2 billion events daily.
 - 40,000 registered sensors in more than 200 countries which determine if new threats are localized, global, or targeted against a specific industry.
 - More than 120 million virus submission systems provide the insight to determine if these are new threats, variants of existing threats, or renewed activity from existing threats. These generate more than 200,000 code samples daily – which are analyzed by Symantec security experts
- Provides the convenience of a self-contained appliance which includes all necessary components to secure the Web gateway, eliminating the need to introduce other technology into a network

- Highly scalable technology to meet the needs of any size organization without increasing latency, ensuring zero impact on end-user browsing experience



System Requirements

- Clients (Internet Browsers)
 - Microsoft Internet Explorer 6.0, 7.0, 8.0
 - Firefox 2.0, 3.0
- Hardware options (Hardware purchase is required):
 - Symantec Web Gateway 8450
 - Platform: Dell R200
 - Approx Concurrent users: 1,000
 - Physical requirements: 1u
 - Dedicated management/monitor: Yes
 - Symantec Web Gateway 8490
 - Platform: Dell R710
 - Approx Concurrent users: 10,000
 - Physical requirements: 2u
 - Dedicated management/monitor: Yes

Data Sheet: Web Security Symantec Web Gateway

Visit our website

<http://enterprise.symantec.com>

To speak with a Product Specialist in the U.S.

Call toll-free 1 (800) 745 6054

To speak with a Product Specialist outside the U.S.

For specific country offices and contact numbers, please visit our website.

About Symantec

Symantec is a global leader in providing security, storage and systems management solutions to help consumers and organizations secure and manage their information-driven world. Our software and services protect against more risks at more points, more completely and efficiently, enabling confidence wherever information is used or stored.

Symantec World Headquarters

20330 Stevens Creek Blvd.

Cupertino, CA 95014 USA

+1 (408) 517 8000

1 (800) 721 3934

www.symantec.com

Confidence in a connected world.

